



2019/2020 Choice Catalog

Choice

noun \ chôis \

something that is preferred or preferable to others; the best part of something: carefully selected.*

Zippo Choice

a handpicked collection of Zippo lighters, selected from hundreds of concepts submitted by our best designers, guaranteed to appeal to even the most refined tastes.

An incredible selection of unique lighters – new engraving combinations – sets high expectations for record-setting sales from this Zippo Choice. This selection of lighters goes beyond the limits of ordinary to truly Choice distinction! Order from Zippo Choice now through July 31, 2020.

*www.dictionary.com

45th Anniversary Venetian®



Introduced in 1974, the Venetian design – originally called the Florentine design, before being renamed in 1976 – displays floral motifs with roots that reach from the Italian Renaissance all the way back to the beginnings of Western Civilization's art. In fact, Zippo's designers based the original Florentine design on a pattern called Western Filigree.

In celebration of this timeless design, Zippo has recreated this globally appealing art using a trio of luxury design methods: 360° MultiCut, Epoxy Inlay, and debuting Zippo's newest design process - Laser 360° to envelop this lighter in classic beauty.

Production limited to 2019 only.

49053

Armor®

High Polish Chrome
MultiCut/Epoxy Inlay/
Laser 360°

Buy One, Plant One™

Zippo's mission to be a global partner in caring for our planet continues with these two new lighter designs in the WOODCHUCK USA series. These emblem designs incorporate birch and mahogany inlays to create tonal silhouettes. And every single lighter is backed not only by Zippo's famous guarantee, but also a promise to plant a tree for each lighter sold.



49043

Street Chrome

Wood Emblem Attached



All WOODCHUCK USA lighters come standard in packaging shown.



49042
Street Chrome
Wood Emblem Attached



360° Laser Engraving

The unparalleled precision of Zippo's laser engraving process continues to evolve new lighter design capabilities. New in 2019, Zippo introduces 360° Laser Engraving, which seamlessly circumnavigates a lighter's entire surface, just like the wildly popular MultiCut process, with one major difference: 360° Laser Engraving is available on classic High Polish base models too, not just Armor finishes.

Zippo's Laser 360° wraps these Black Ice lighters in vintage Zippo style, proving that no matter how you write it, Zippo is always newsworthy.

49049
Black Ice®
Laser 360°



All Laser 360° lighters come standard in the Zippo Premium Box.



49051
Black Ice®
Laser 360°

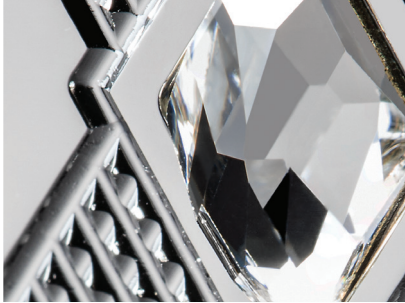
The all-seeing Eye of Providence adorns two new Choice designs. The first casts the divine gaze from a green Swarovski® crystal set into a deep carved pyramid on a Brass High Polish Armor lighter, and also features a gold flashed insert. The Multi Color finish lighter is adorned with additional ancient symbols surrounding the Eye – each detail within this design created by Zippo's intricate Laser Fancy Fill process.



49060
Armor®
High Polish Brass
Deep Carve/
Emblem Attached

49061
Multi Color
Laser Fancy Fill

Adorned with Swarovski® Crystal



MultiCut Slim

In another Zippo first, the MultiCut process debuts on a Slim High Polish Chrome lighter. The elegant diamond patterned band that encircles the middle of the lighter features a solitaire Swarovski® crystal accent.

49052
Slim Armor®
High Polish Chrome
MultiCut/
Emblem Attached

Adorned with Swarovski® Crystal



49002
Satin Chrome
Color Image/Auto Engrave



29986
Black Matte
Texture Print

© 2019 Playboy Enterprises International, Inc. Playboy and the Rabbit Head Design are trademarks of Playboy Enterprises International, Inc. and used under license by Zippo Manufacturing Company.

Available in selected countries, some restrictions may apply.

Top Designs

The perpetually dapper Playboy bunny radiates charm in this design that was voted one of the best new designs among surveyed consumers.

Zippo's recent introduction of texture printing is gaining plenty of consumer interest. This texture printed lock design was one of the most highly rated lighter designs from Zippo's consumer testing results.





49058

Armor®

High Polish Chrome

Deep Carve/ Epoxy Inlay

Crystal Skulls

These two new skull designs feature the largest Swarovski® crystal attachments Zippo has ever put on a lighter. Glimmering 3-D crystal skulls combined with auto engraved, feathered wings and a deep carved spider web tested incredibly well globally with consumers, and received overwhelmingly positive feedback from European consumers, in particular.



49034
Satin Chrome
Auto Engrave/
Emblem Attached

Adorned with Swarovski® Crystal

29931
Armor®
High Polish Chrome
Deep Carve/Emblem Attached

Adorned with Swarovski® Crystal



29987
High Polish Indigo
Laser Engrave

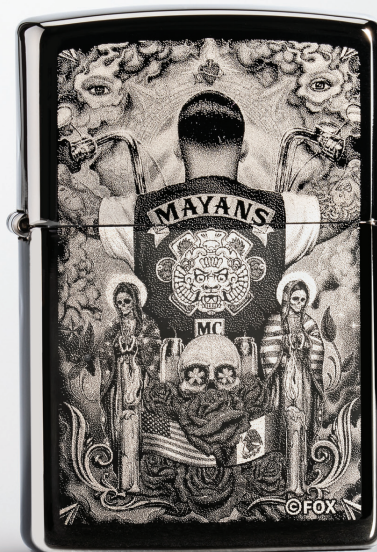
49035
Armor®
Antique Brass
MultiCut

Mayans M.C.

After a strong debut in the Spring Brochure, Zippo introduces two new Mayans M.C. designs. Mayans M.C. is the next chapter in the Sons of Anarchy™ saga, Kurt Sutter's award-winning series, and premiered to the best ratings of any new cable series in 2018, in every major demographic. Season 2 begins airing in September 2019, and devoted fans of the show are eager for memorabilia to show their loyalty to the club.



49032
Armor®
High Polish Chrome
Deep Carve/Color Image



49031
Black Ice®
Photo Image



49048
High Polish Blue
Laser 360°



49046
High Polish Blue
Laser 360°



49037
Armor®
High Polish Chrome
MultiCut

Colorful High Polish Lighters

Deep Carve and MultiCut treatments are dazzling on high polish lighters, adding even more vibrant flashes of color. The High Polish Blue lighter has been deep carved on the front and back sides with an elegant jacquard diamond pattern. The High Polish Green lighter is covered in an Art Deco pattern by Zippo's MultiCut process and features a lustre etched dragon on the front.



29964

Armor®
High Polish Blue
Deep Carve

49054

Armor®
High Polish Green
MultiCut/Lustre



3D Deep Carve

Zippo is not only inventing new decorating methods, the design team is also pushing the most popular design capabilities to exciting new limits. In this Armor lighter design, the immensely popular Black Ice finish is adorned with a Zippo flame that appears to be fully-3D, but in reality was created through clever artistic manipulation of Zippo's deep carved process.

29928
Armor®
High Polish Black Ice®
Deep Carve

James Bond

No matter what you call him – Bond, James Bond, 007, or (if you're feeling like a villain) Mr. Bond – everyone understands the allure of 007. This 007 Deep Carve design on an Armor Antique Silver Plate lighter allows anyone with good taste to carry a bit of Bond's mystique.



49033

Armor®

Antique Silver Plate

Deep Carve

007™ and James Bond materials © 1962-2019
Danjaq and MGM. 007™ and related James Bond
Trademarks are trademarks of Danjaq, LLC.
All Rights Reserved. www.007store.com



49059
Black Ice®
Photo Image



49040
Armor®
High Polish Black Ice®
Deep Carve/Laser Engrave

JACK DANIEL'S and OLD NO. 7 are registered trademarks used under license to Zippo Manufacturing Company. © 2019, Jack Daniel's — All Rights Reserved. Your friends at Jack Daniel's remind you to drink responsibly. For sale to adults of legal drinking age.

Available in selected countries, some restrictions may apply.

Chinese Zodiac

Zippo continues the Chinese Zodiac collection with 2019's the Year of the Rat. The combination of laser and auto engraving on a red matte lighter brings the best fortune possible to its lucky recipients.



29929

Red Matte

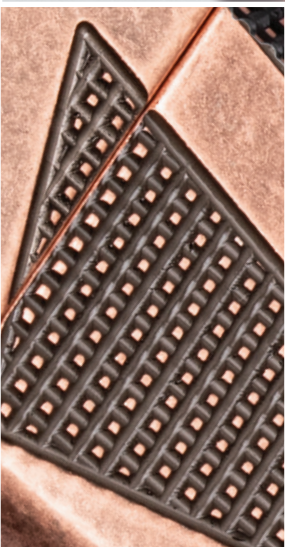
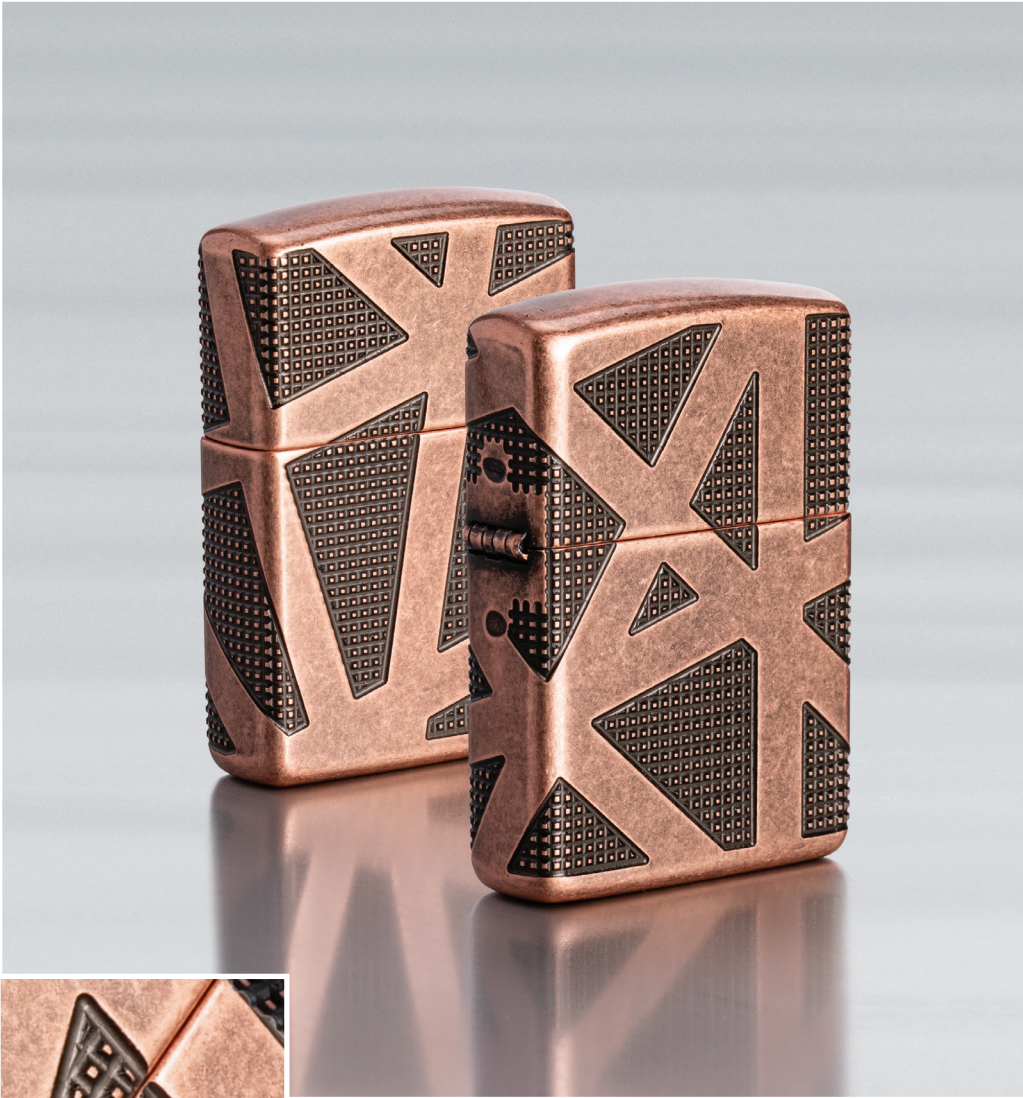
Laser Engrave/Auto Engrave



49045

Multi Color

Laser 360°



49036
Armor®
Antique Copper
MultiCut

For optimum performance of every Zippo windproof lighter, we recommend genuine Zippo flints, wicks, and premium lighter fuel.

Lighter Fuel



3165EX
Lighter Fuel 12 oz.
Shipping
carton of 24.



3141EX
Lighter Fuel 4 oz.
Shipping
carton of 96.

Flints and Wicks



2406C
6 Flints Plastic Dispenser
24 dispensers per display.
24 boxes per shipping carton.



2406N
6 Flints Plastic Dispenser
Individually carded,
punched for pegboard use.
24 cards per counter
display box. 24 boxes
per shipping carton.



2425
Wick
Individually carded,
punched for pegboard use.
24 cards per counter
display box. 24 boxes
per shipping carton.

PACKAGING

One Box

Unless otherwise stated, every Zippo windproof lighter in this catalog is packaged in the dealer friendly "one box". Both the attractive gift box and the cardboard I-card are 100% recyclable. The patented "one box" is attractive, easy to handle and designed to fit in every Zippo display.



ZLuxury

The ZLuxury box was designed especially to showcase the incredible engraving that envelopes each Armor 360° MultiCut Zippo lighter. A high-density foam insert securely holds the lighter, while mirrored wings allow a wraparound view of the design without removing the lighter from the packaging or display case. Silver, black and red foil stamped accents adorn the lid and makes for an elegant gift presentation. ZLuxury packaging comes standard with all MultiCut lighters.



Zippo Premium Box

The Zippo Premium box debuts as the standard packaging for every Laser 360° lighter. The box has the same footprint and lid as the attractive one box, but with several upscale elements inside borrowed from the ZLuxury packaging. A high density foam insert securely holds the lighter, while mirrored wings allow a wraparound view of the design without removing the lighter from the packaging or display case.



Part Number – Page Number Cross Reference Table

Part #	Pg.	Part #	Pg.
2406C.....	25	49036.....	23
2406N.....	25	49037.....	17
2425.....	25	49040.....	21
3141EX.....	24	49042.....	5
3165EX.....	24	49043.....	4
29928.....	19	49045.....	22
29929.....	22	49046.....	16
29931.....	13	49048.....	16
29964.....	18	49049.....	6
29986.....	10	49051.....	7
29987.....	14	49052.....	9
49002.....	10	49053.....	3
49031.....	15	49054.....	18
49032.....	15	49058.....	12
49033.....	20	49059.....	21
49034.....	13	49060.....	8
49035.....	14	49061.....	8

Zippo Guarantee:

Any Zippo pocket lighter, when returned to our factory, will be put in first class mechanical condition free of charge, for we have yet to charge a cent for the repair of a Zippo pocket lighter, regardless of age or condition. The finish, however, is not guaranteed.

This guarantee gives you specific legal rights and you may also have other rights which vary from state to state. Other Zippo products carry their own specific warranties.

Consumer Disclaimer: Terms and pricing are limited to authorized Zippo sales distributors and wholesalers only. Unless specified as retail pricing, this information is not intended for consumer use. Because we are constantly improving our products, some items may not look exactly as depicted. Prices and specifications subject to change without notice.



©2019 Zippo Manufacturing Co.
All Rights reserved.

zippo.com • Printed in USA

